

ICG **INDOFINE Chemical Company, Inc.**

121 Stryker Lane, Bldg. 30, Suite 1 • Hillsborough, NJ 08844 • U.S.A.

Phone: (908) 359-6778 • FAX: (908) 359-1179

website: www.indofinechemical.com

e-mail: chemical@indofinechemical.com

CERTIFICATE OF ANALYSIS

Catalog Number: 04-2060

Product Name: **MALTOHEPTAOSE**

CAS Number: [34620-78-5]

Lot Number: 1906272

Chemical Formula: C₄₂H₇₂O₃₆

Molecular Weight: 1153.0

Appearance: White powder

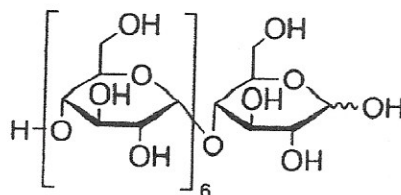
Specific Optical Rotation: 175.9°

Water Content(KF): 4.7%

Solubility(50 mg/mL in H₂O): Clear, colorless solution

Storage: Store 0-8°C

Purity(HPLC): 62.8%



Prepared by:
Ramesh Mandadi
Ramesh Mandadi
Director of Operations

Reviewed and approved by:
Sujata Moton
S. Moton
VP